

Blue Gold Technology



ZONESCAN Alpha
Remote Leak Detection



LDS1000

CCTV, Hydrophone & Location Sonde



CELLO & REGULO

Pressure and Flow Control



Jeremy Llewellyn

CEO

ZONESCAN ALPHA

Remote Leak Monitoring

- ❑ **Zonescan Alpha** – fixed network monitoring
- ❑ It's new - 2 years on the market
- ❑ Installations around the world
- ❑ ADWEA/AADC Here in UAE

ZONESCAN ALPHA Hardware

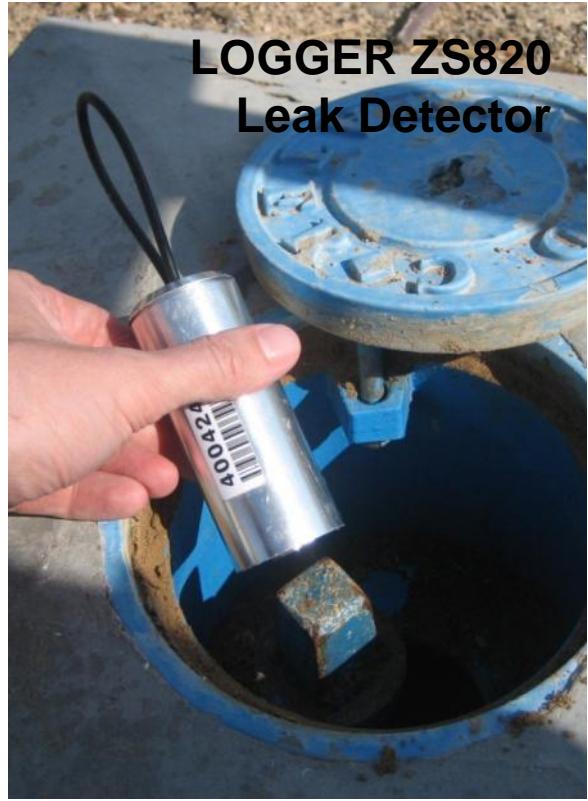
**ALPHA
Data Collector**



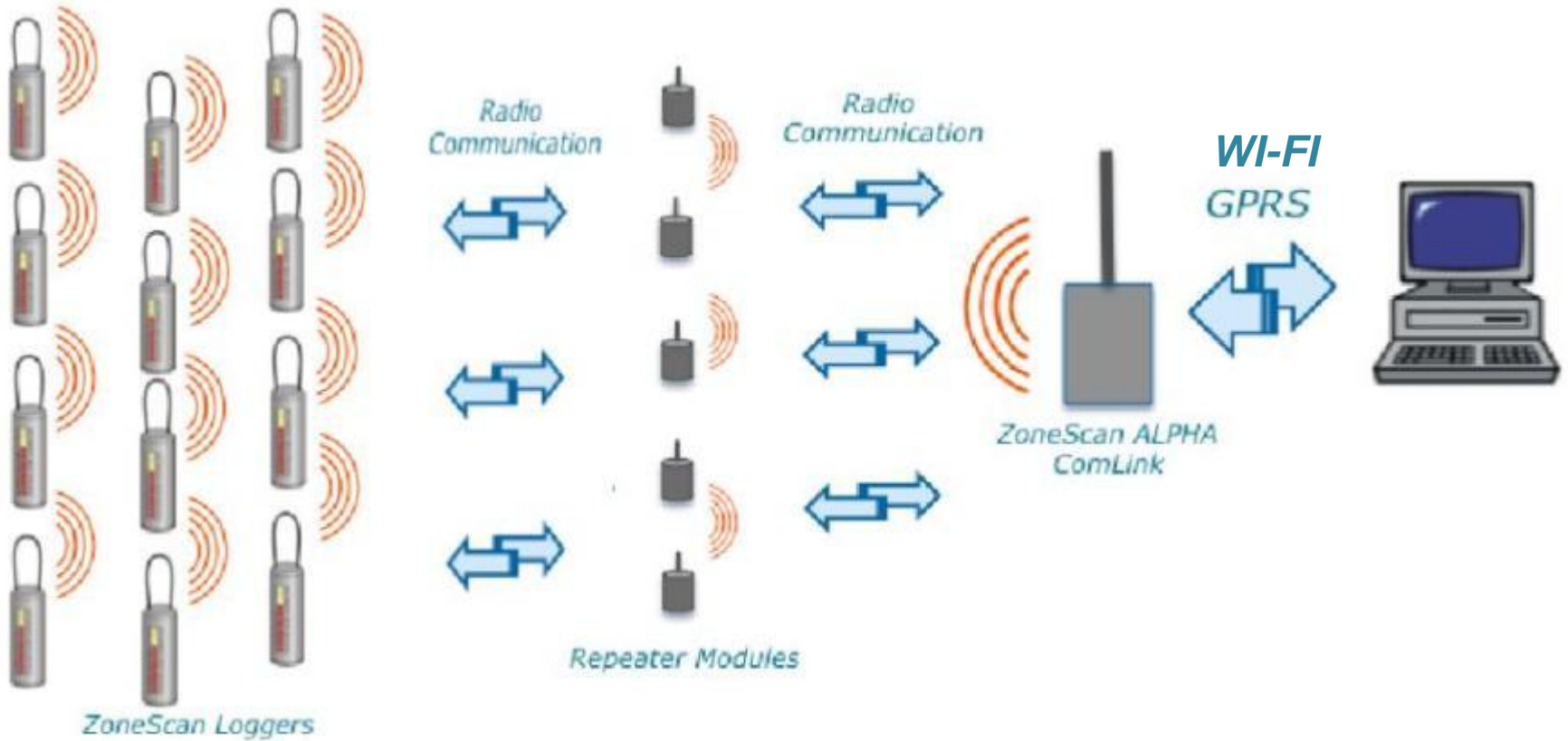
**REPEATER
Radio Booster**



**LOGGER ZS820
Leak Detector**



Zonescan Net Communications



Installation - Logger



Magnetic attachment inside valve chambers

Google Maps

Software : Showing Leak Location

LEAK
Location

The screenshot displays the ZONSCAN net software interface. At the top, the browser address bar shows '172.23.64.150'. The software title is 'ZONSCAN net'. Below the title bar, there are navigation tabs for 'Leak Detection', 'Maintenance', and 'Administration'. The main interface is divided into several sections:

- Map Section:** Shows a Google Map with a street grid. A specific location is highlighted with a blue circle and a red arrow, indicating the leak location. The map includes a scale bar (0 to 200 ft) and a 'Map' button.
- Correlated Leaks Table:** A table listing correlated leaks with columns for 'Leak Values', 'Logger 1', 'Distanc...', 'Pipe Le...', 'Distanc...', 'Logger 2', 'Pipe Setup', and 'Comments'. The first row shows a correlation of 80% for leak #403187.
- Correlation Graph:** A 'Cross Correlation' graph showing a sharp peak at approximately 100.0 meters. The x-axis is labeled 'm' and ranges from 0.0 to 150.0. The y-axis ranges from 0 to 3.
- Leak Details:** Below the graph, there is a 'Quality' indicator (64%) and a diagram showing the distance between 'Logger 1' (101.9 m) and 'Logger 2' (43.1 m) relative to the 'Leak' location.

The bottom of the screen shows the Windows taskbar with various open applications and the system clock displaying '1:35 PM'.

Problems Encountered / Overcome

Water Pumps



Air Conditioners

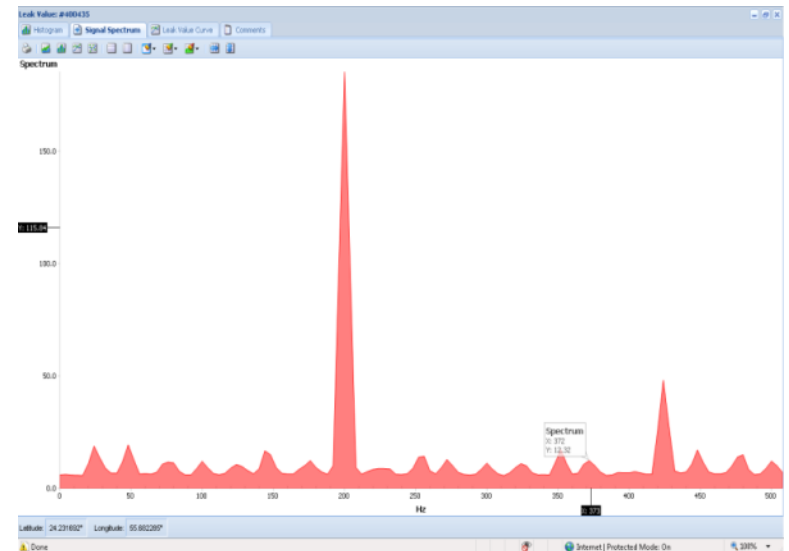
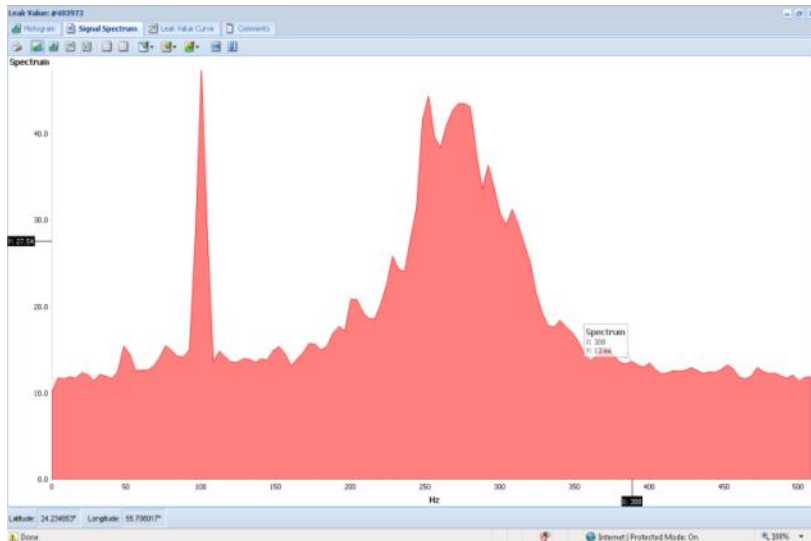


Software had to be enhanced

Eliminates Electrical Noise

Water Leak

Air Conditioning Units running
Water pumps
Street Lamps
Other Electrical/Machinery



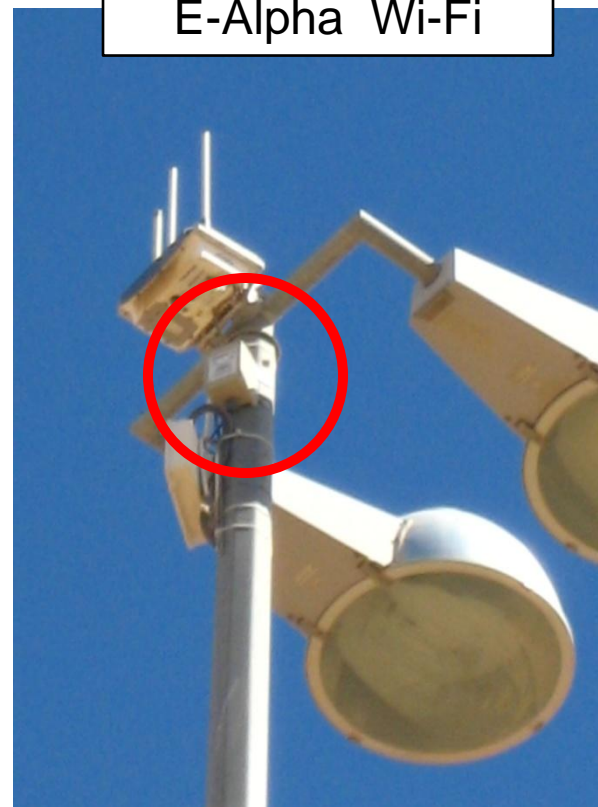
Software algorithms eliminate electrical profiles

Wi-Fi Integration

Street Lamp Mounted



E-Alpha Wi-Fi



**E-Alpha Integrated to Wi-Fi
Alternative is GPRS**

Thank you
Jeremy Llewellyn
+971 50 871 4184



Now Introducing :

Mohammed Eid Obaid
Water O&M Division Manager
Al Ain Distribution Company



Blue Gold
Technology



GUTERMANN
find.more.leaks